



Release Information

Allocare AMS & Allocare WEB

Release 25.9

December 2025

Copyright and Comments

Copyright © 2025 by Allocare AG, Kantonsstrasse 3, CH-6246 Altishofen/Switzerland.

www.allocare.com

info@allocare.com

Information contained in this document was carefully written after thorough research and has been reviewed for correctness. Despite all efforts, mistakes can still occur. If one is encountered, we kindly request you to report to Allocare Support for rectification. In no event Allocare AG, or any employees of Allocare AG, shall be liable for any damages arising out of mistakes or misunderstandings contained in the information of this document.

The name Allocare and the Allocare logo are trademarks of Allocare AG, Altishofen. Other hardware and software product names referenced in this document are trademarks of the respective company.

This document or any part of it is not allowed to be distributed or reproduced in any form without the explicit consent of Allocare AG.

Introduction

This Release Information describes the most important new functionalities delivered by **Allocare AMS & Allocare WEB Release 25.9**. The delivery of the software releases is handled via support or project managers.

For additional information regarding the functionality, please contact your **Account Manager** or:

Support

Phone: +41 62 748 65 55

Mail: support@allocare.com

Sales

Phone: +41 62 748 65 65

Mail: sales@allocare.com

Contents

1.	Allocare AMS Portfolio	4
1.1	New Transaction Type Accumulation	4
1.2	Preserved Settings Expired Links	4
1.3	Free Form Order Search	5
1.4	Code Value Editor	5
1.5	Scheduled Tasks	6
1.6	Search in Job History Logfile	6
1.7	Allocare AMS Info	7
1.8	Reporting	8
1.8.1	General	8
1.8.2	Standard Reports	9
1.8.3	Add-On-Reports	11
2.	Allocare WEB	12
2.1	New Portfolio Detail Page	12
2.2	Time-based One-Time Passwords	13
3.	Modules & Interfaces	14
3.1	Private Equity: New Methods	14
3.2	Public API Extension for Position Data Retrieval	15
3.3	Custodian Interfaces	16
4.	System Requirements	17
4.1	Operating Systems	17
4.2	Database Management Systems	17
4.3	Web Servers	17
4.4	Web Browsers	17
5.	Installation Requirements	18
5.1	Microsoft Visual C++ Redistributable	18
5.2	Microsoft .NET Framework	18

1. Allocare AMS Portfolio

1.1 New Transaction Type Accumulation

Mid Office Transactions

The Transaction Editor has been enhanced to support a new transaction type, 'Accumulation'. This addition allows users to accurately record and manage dividend accumulation transactions, ensuring that all related cash flows are captured correctly within the portfolio.

By introducing this functionality, the system provides greater flexibility in handling dividend-related operations and improves the accuracy and completeness of transaction reporting.

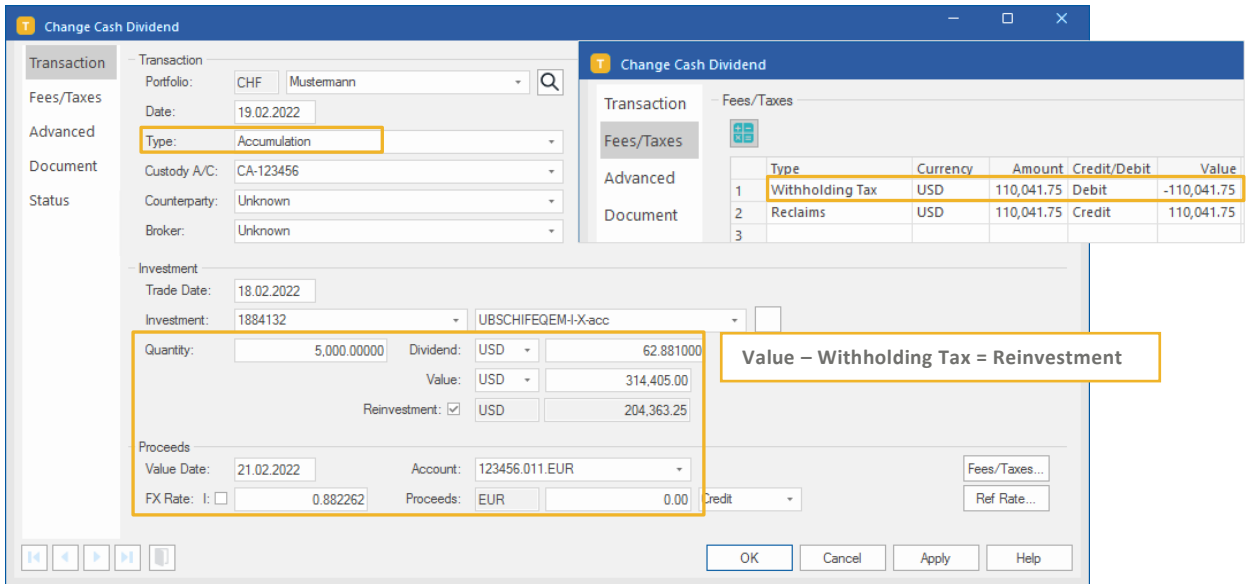


Figure 1: Transaction Editor – New Type

1.2 Preserved Settings Expired Links

PM Portfolios

The option **Show Expired** displays both current records and any past (expired) entries. The state of the checkbox is now preserved across different application areas. Users no longer need to re-select this option

each time they switch views or reopen the application. The preference is consistently retained in the **Portfolio Editor**, **Investment Editor**, and the **Print Job List**.

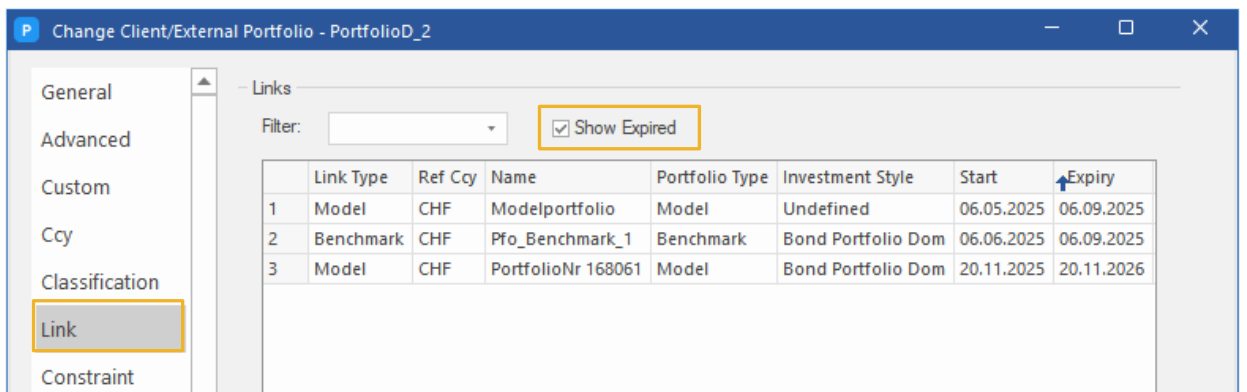


Figure 2: Show Expired Links

1.3 Free Form Order Search

The **Order Search** function provides the greatest possible flexibility when searching for orders based on any attributes. It has been improved by implementing

a **free-form search**. It now supports **auto-completion** and uses more **user-friendly terms**, making it easier and faster for users to find orders.

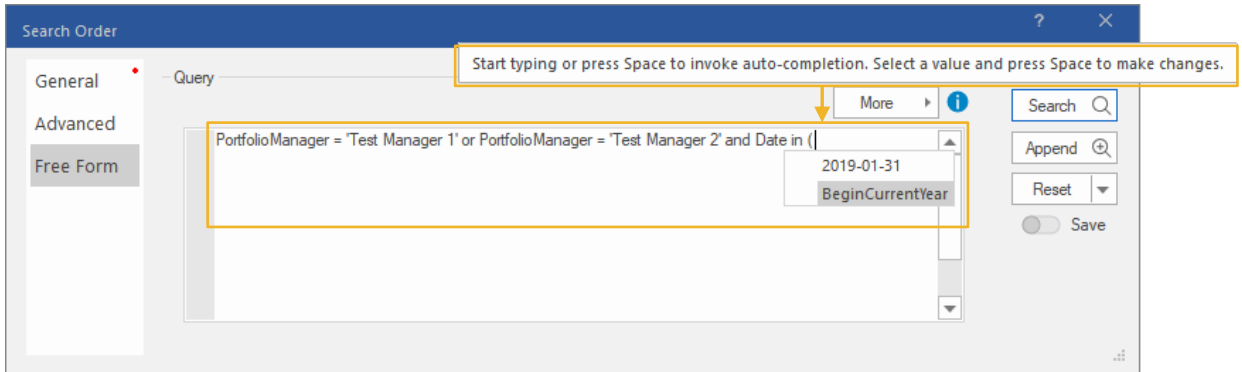


Figure 3: Free Form Order Search

1.4 Code Value Editor

A new XML editor has been introduced to enhance the editing of XML properties. The editor provides built-in schema validation, ensuring that XML content is consistent with the defined structure and reducing the risk

of formatting errors. With this improvement, users benefit from more reliable and faster error detection, and increased efficiency when working with XML configurations.

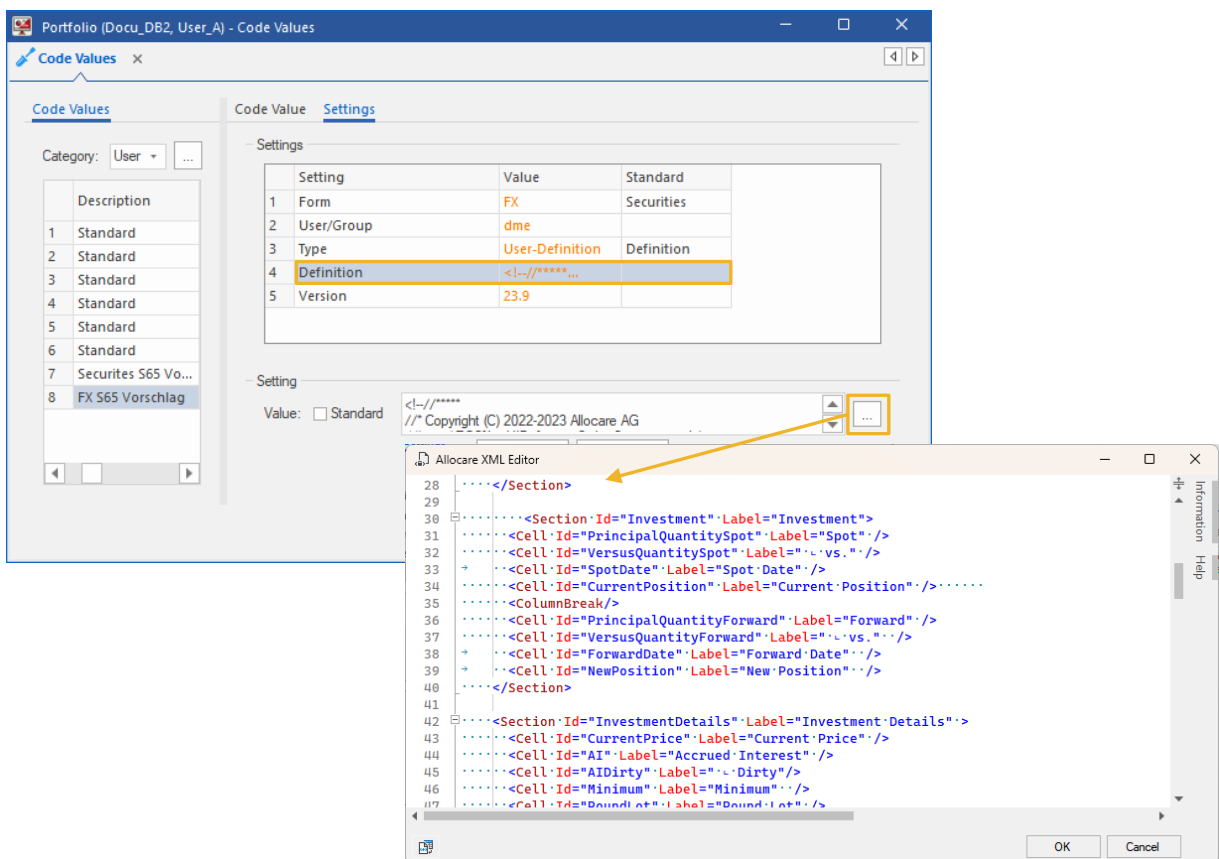


Figure 4: Code Value Editor with Opened XML Editor

1.5 Scheduled Tasks

The Scheduled Task List has been enhanced with additional columns that provide deeper insights into task execution. Users can now view the **last and average duration**, as well as **estimated finish time and progress**, enabling better monitoring and planning of scheduled processes.

The search functionality within Scheduled Tasks has been enhanced to include **job status** as a filter

crit^{erion}, making it easier for users to find and manage specific jobs. In addition, the system now displays a **warning when a job is started twice**, helping to prevent accidental duplicate executions.

The maximum number of retrievable tasks has also been increased, allowing users to access larger datasets more efficiently.

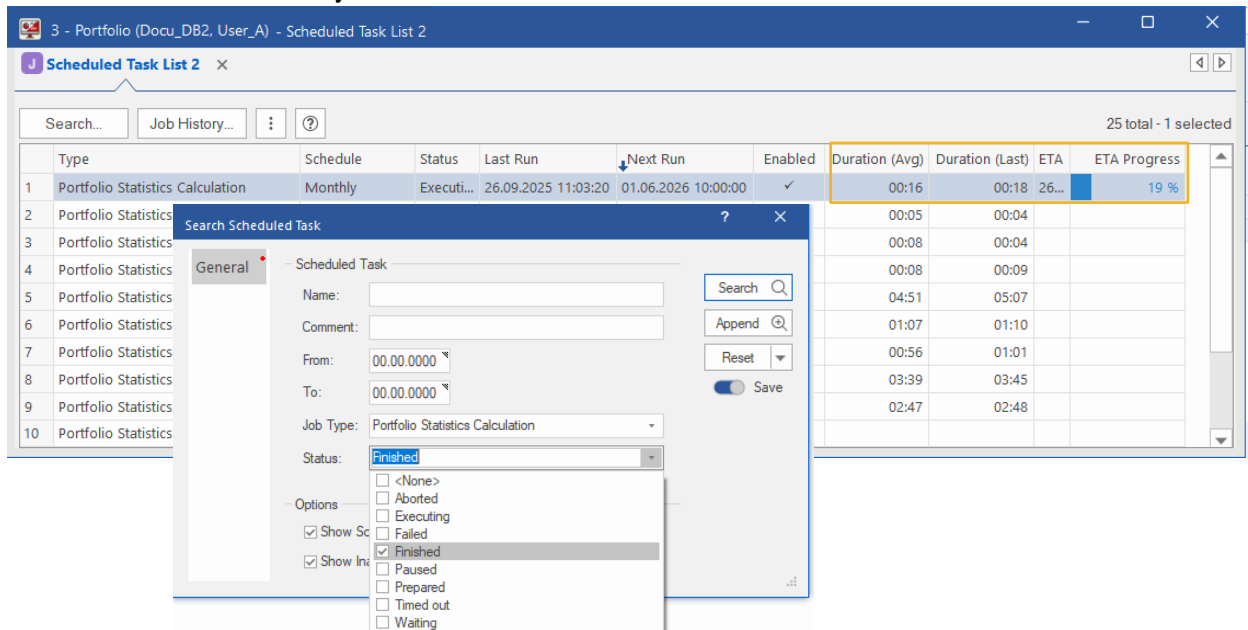


Figure 5: Scheduled Task List with Progress Bar, Search Scheduler Task Dialog

1.6 Search in Job History Logfile

The **Job History** feature has been enhanced with a new **Find functionality** in the **Logfile view**. Users can now quickly search for specific entries by pressing **Ctrl+F**

or **F3**, making it easier to locate relevant information within large log files.

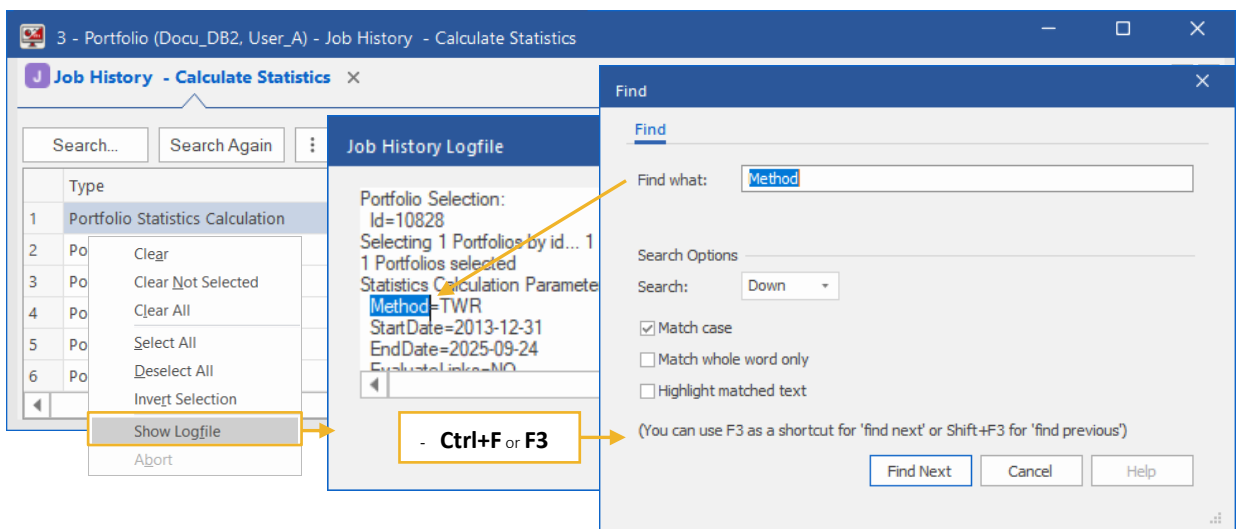


Figure 6: Search in Job History Logfile

1.7 Allocare AMS Info



In **Allocare AMS Info**, recipient selection now shows both the **login name** and the **full name** (e.g., manager name) for better clarity. Input is enhanced with

automatic completion (IntelliSense). Full names are shown only when enabled in **Allocare AMS | Options | Display | Recipient** → Name (User).

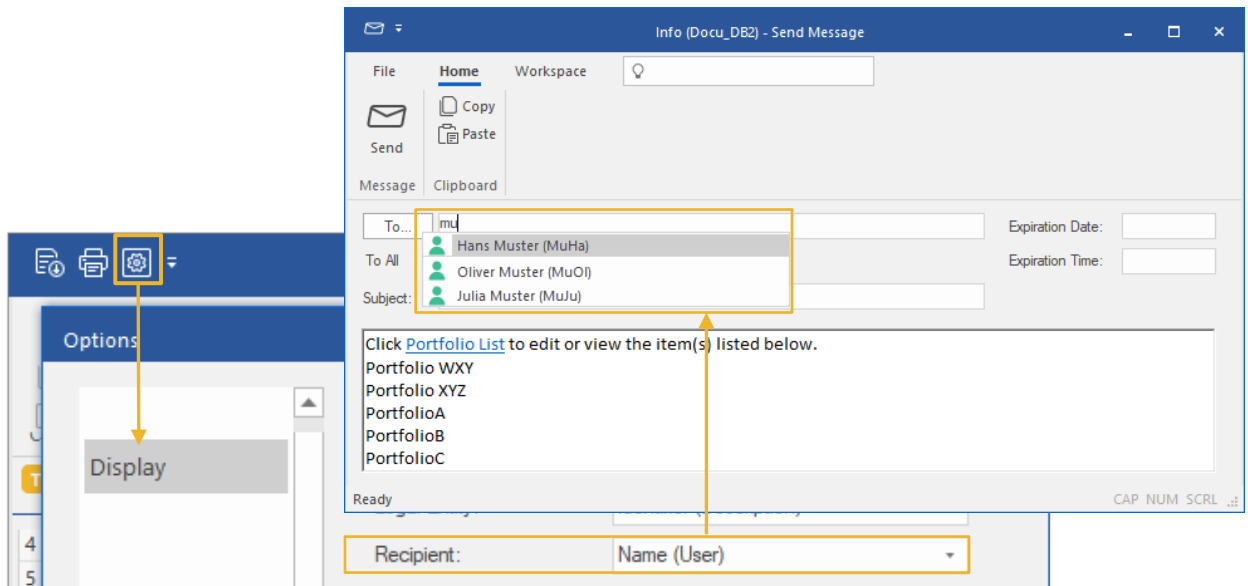


Figure 7: Allocare AMS Info

1.8 Reporting

1.8.1 General

Note I: The **Active Reports** and **Crystal Reports** engines have been **decommissioned** with Release 25.9.

Note II: As part of the migration of the previous report **Asset Allocation (AA-001)**, the new standard report **AA-014** has been introduced. Therefore, **COMP-AA-001** will be **deactivated** and replaced by AA-014.

Report Designer Manual

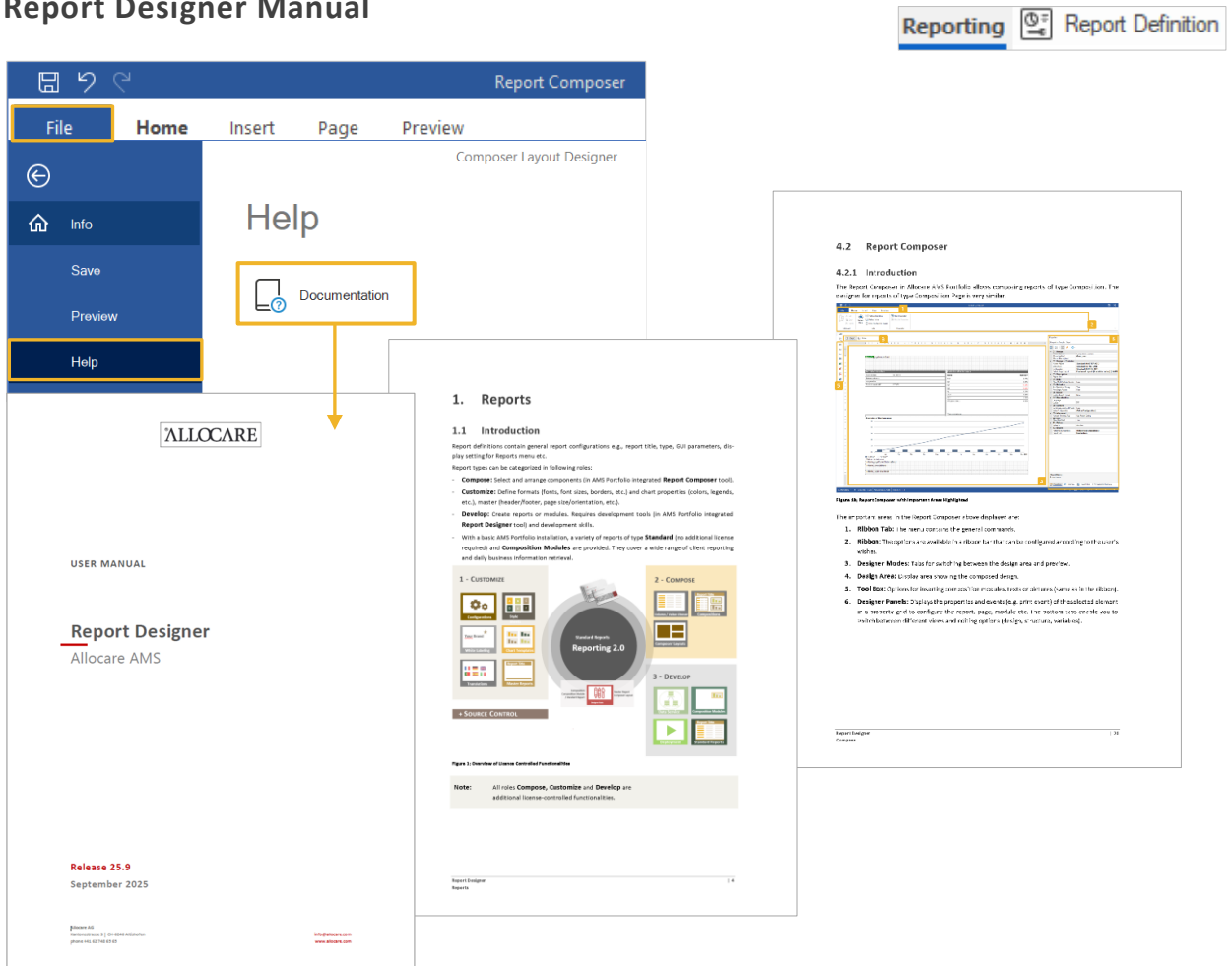


Figure 8: Accessing the Report Designer Manual

A new **Report Designer Manual** is now available, offering a comprehensive overview of all license-based functions for creating and designing custom reports. It provides practical guidance for both **creating** and **customizing** reports within the AMS Portfolio environment.

With **Create**, users can select and arrange report components using the integrated **Report Composer** tool. With **Customize**, they can define individual styles such as fonts, frames, and chart properties, as well as master layouts for headers, footers, and page formats. The new manual is conveniently accessible directly from the Report Designer via **File → Help**.

Note: The **Report Designer** is licensed separately.

1.8.2 Standard Reports

Display of Interest Rate Time Series

New report composition modules are now available to provide enhanced insights into reference and risk-free as well as term-structured interest rates. These reports



offer both graphical and tabular views, enabling more comprehensive analysis of term structures and rate evolutions.

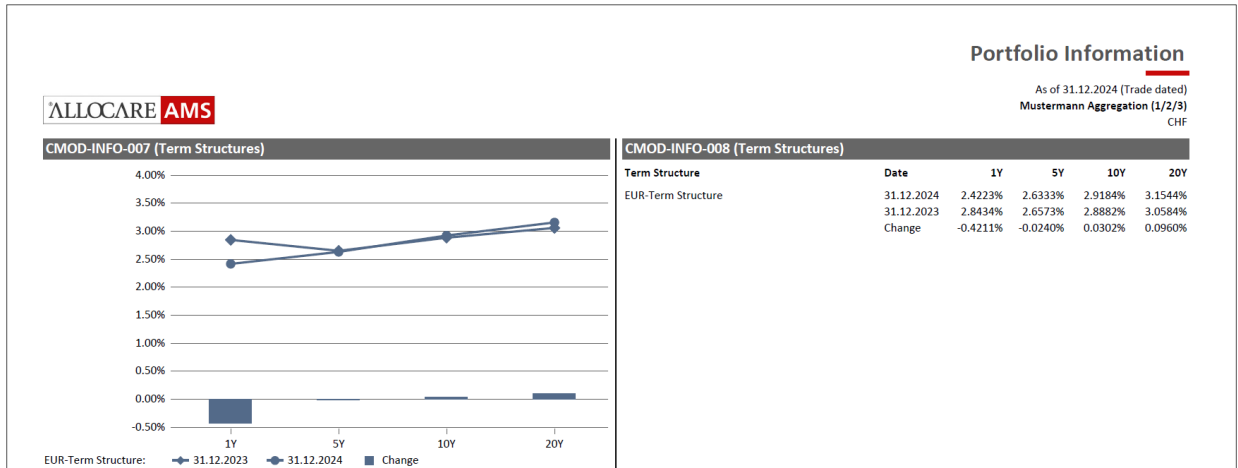


Figure 9: Portfolio Information Report (CMOD-007)

Risk Report (CMOD-RISK-004, RISK-004)

A new report (RISK-004) and the associated composition module (CMOD-RISK-004) have been implemented for the **Historical Risk/Return Development** view.

This enhancement provides clearer insight into the development of key risk and return indicators over time, enabling more informed portfolio and risk assessments.

ALLOCARE AMS		Historical Risk/Return Evolution									
		Mustermann Aggregation (1/2/3), As of 31.12.2024 (Trade dated) Muster-Benchmark (Balanced), As of 31.12.2024 CHF									
	Period	Return (Mean)	Standard Deviation	Tracking Error	Sharpe Ratio	Treynor Ratio	Jensen's Alpha	Information Ratio	Beta	R ²	
CHF	2021	0.01%	0.55%	1.36%				-0.17	0.03	0.01	
		0.24%	1.29%	0.00%					1.00	1.00	
	2022	-0.34%	0.58%	2.20%	-0.49	-2.96	-0.17	0.41	0.10	0.15	
		-1.24%	2.36%	0.00%	-0.50	-1.18	0.00		1.00	1.00	
	2023	0.00%	1.00%	2.41%				-0.18	-0.13	0.06	
		0.44%	1.96%	0.00%					1.00	1.00	
	YTD	0.23%	0.59%	1.31%				0.00	-0.05	0.01	
		0.23%	1.11%	0.00%					1.00	1.00	
	since inception	-0.02%	0.92%	1.90%	0.04	1.83	0.03	-0.12	0.02	0.00	
	since inception p.a.	0.21%	1.79%	0.00%	0.15	0.27	0.00		1.00	1.00	
		-0.27%	3.20%	6.58%	0.13	19.37	0.36	-0.40	0.02	0.00	
		2.38%	6.21%	0.00%	0.50	3.08	0.00		1.00	1.00	
Total	2021	-0.31%	1.06%	1.97%				-0.41	-0.17	0.05	
		0.51%	1.43%	0.00%					1.00	1.00	
	2022	-0.38%	0.87%	3.05%	-0.37	-10.34	-0.28	0.31	0.03	0.01	
		-1.31%	3.01%	0.00%	-0.42	-1.26	0.00		1.00	1.00	
	2023	-0.41%	3.32%	4.47%				-0.24	-0.44	0.08	
		0.67%	2.18%	0.00%					1.00	1.00	
	YTD	0.14%	1.24%	1.79%				-0.16	-0.17	0.02	
		0.42%	1.12%	0.00%					1.00	1.00	
	since inception	-0.16%	1.95%	2.83%	-0.05	5.57	-0.10	-0.18	-0.02	0.00	
	since inception p.a.	0.34%	2.11%	0.00%	0.19	0.40	0.00		1.00	1.00	
		-2.18%	6.74%	9.79%	-0.22	78.52	-1.40	-0.62	-0.02	0.00	
		3.92%	7.32%	0.00%	0.63	4.62	0.00		1.00	1.00	

Figure 10: Risk Report (CMOD-RISK-004, RISK-004)

Performance Report – Time Weighted Return (PERF-025)

This report shows the time weighted return of the selected portfolio over a defined period. Any possible correction transactions that are required for the time weighted return calculation are also listed.

Optionally, the monthly time weighted returns and the cumulative evolution of the time weighted return over the defined period is also shown. This report replaces the old Crystal report PERF-005.

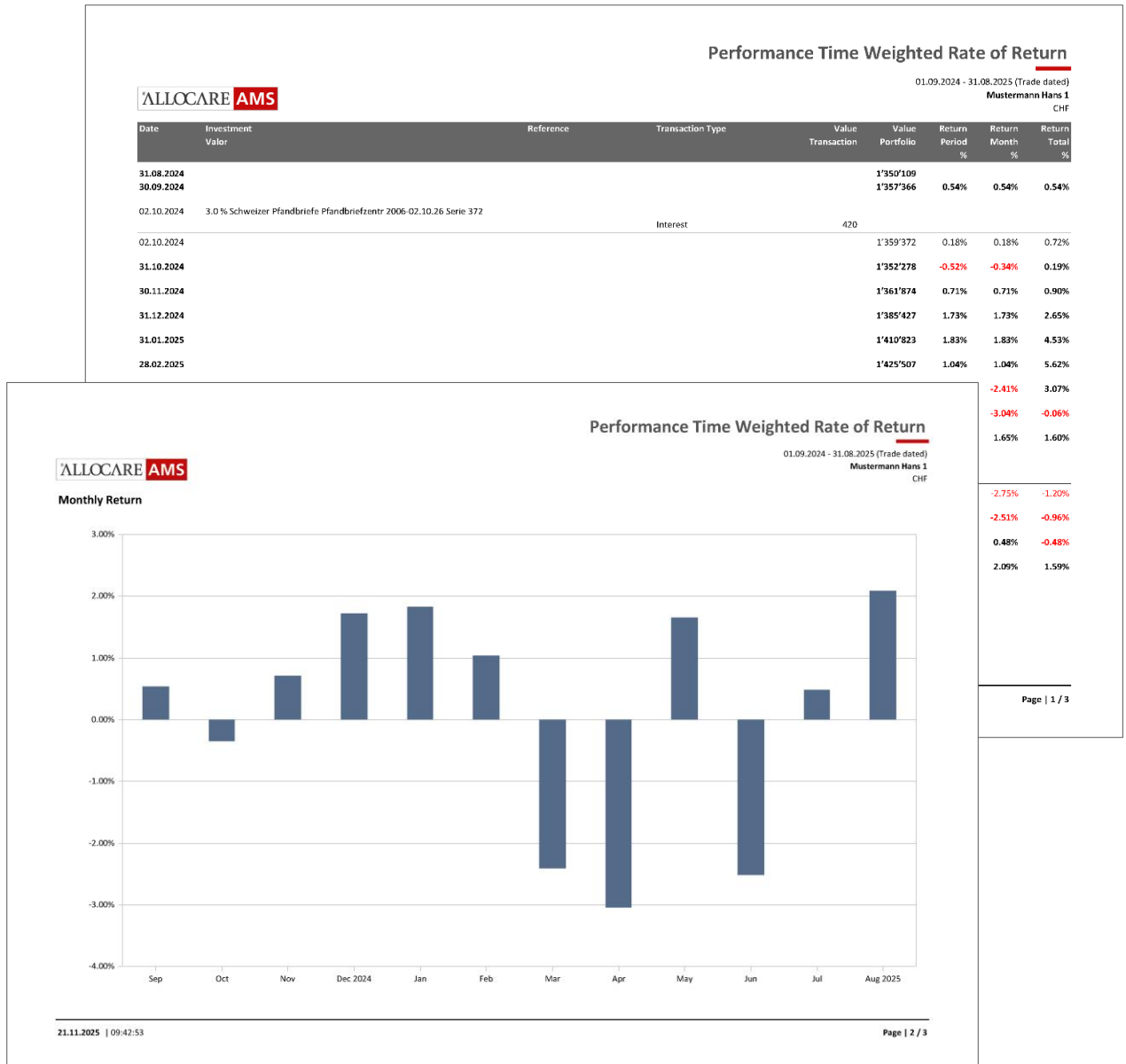


Figure 11: Report Performance - Time Weighted Return (PERF-025)

1.8.3 Add-On-Reports

Coverage Ratio Report

The **Coverage Ratio Report** provides an estimate of the funding ratio of the pension fund as of the current release. The ratio represents the relationship between the pension fund's available assets and its accrued liabilities at a specific reporting date in the fiscal year. A ratio of 100% or higher indicates that the fund's assets are sufficient to cover all current and projected obligations towards beneficiaries.

Persistent underfunding would require corrective measures, while a surplus (overfunding) signals additional risk-bearing capacity. The report delivers insights into the financial stability of the pension plan, highlights potential risks, and supports stakeholders in the assessment of the fund's long-term sustainability.

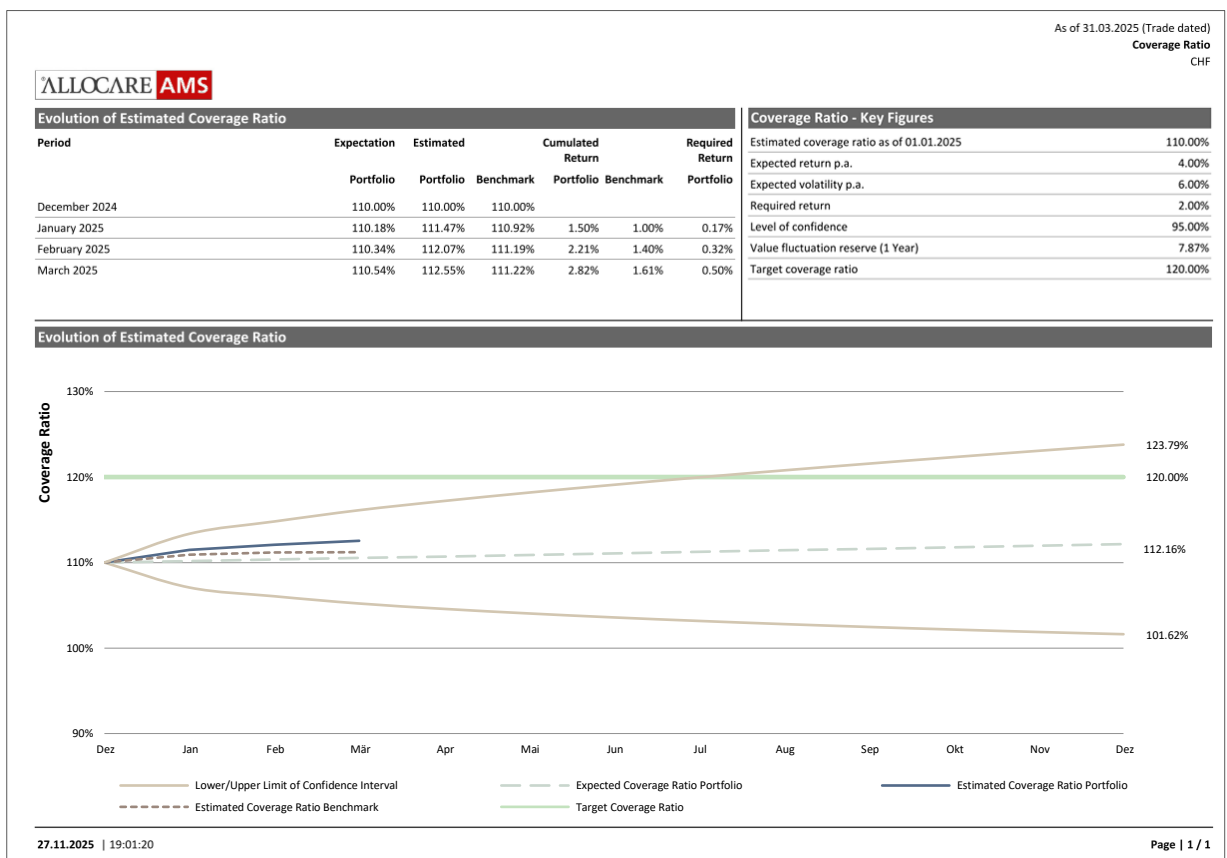


Figure 12: Coverage Ratio Report

2. Allocare WEB



2.1 New Portfolio Detail Page

The portfolio detail view now supports a mini/maxi layout. The default configuration can be customized for user groups with the appropriate permissions, and

individual users can personalize their own views based on the standard setup.

The screenshot displays the Allocare WEB interface. At the top, there is a navigation bar with tabs: CRM, Analysis, Portfolio Management, Compliance, Reporting, and Workspace. Below this is a 'Portfolios' section with a table listing various portfolios. The table has columns: Name, Ref Ccy, Investment Style, Contract Type, Status, and Description. The row for 'PortfolioNr 22302' is highlighted. Two detail windows are open, showing the details for 'PortfolioNr 22302'. The 'mini' view shows a summary of general information, including the total assets (CHF 22'160'367) and a list of accounts. The 'maxi' view shows a more detailed view of the same information, including a list of custody accounts.

Name	Ref Ccy	Investment Style	Contract Type	Status	Description
PortfolioNr 22301	CHF	Total Assets	Discretionary	Active	PortfolioDescr 22301
PortfolioNr 22302	CHF	Total Assets	Discretionary	Active	PortfolioDescr 22302
PortfolioNr 22375	CHF	Total Assets	Discretionary	Active	PortfolioDescr 22375
PortfolioNr 22376	CHF	Total Assets	Discretionary	Active	PortfolioDescr 22376
PortfolioNr 22377	CHF	Total Assets	Discretionary	Active	PortfolioDescr 22377
PortfolioNr 22378	CHF	Total Assets	Discretionary	Active	PortfolioDescr 22378
PortfolioNr 22379	CHF	Total Assets	Discretionary	Active	PortfolioDescr 22379
PortfolioNr 22380	CHF	Total Assets	Discretionary	Active	PortfolioDescr 22380

Portfolio - PortfolioNr 22302 (Mini View)

PortfolioDescr 22302
CHF 22'160'367
Client | LegalEntity 75100 | Discretionary | Total Assets
Active

GENERAL

Description: PortfolioDescr 22302
Status: Simulated
Investment Style: Total Assets
Contract Type: Discretionary
Currency: CHF
Client: LegalEntity 75100

ACCOUNTS

Identifier	Currency
AcctN459721 (PF22302) AUD	AUD
AcctN45965 (PF22302) CAD	CAD
AcctN22313 (PF22302) CHF	CHF
AcctN27049 (PF26090) CHF	CHF
AcctN22314 (PF22302) EUR	EUR
AcctN27050 (PF22302) EUR	EUR
AcctN22315 (PF22302) GBP	GBP
AcctN45966 (PF22302) SEK	SEK

CUSTODY ACCOUNTS

Identifier	Custodian
CustodyAcctN2592 (PF22302)	Unknown

LINKS

Portfolio - PortfolioNr 22302 (Maxi View)

PortfolioDescr 22302
CHF 22'160'367
Client | LegalEntity 75100 | Discretionary | Total Assets
Active

GENERAL

Total Assets
Benchmark
Model Portfolio
PortfolioNr 61325
Beneficial Owner
Portfolio Manager
LegalEntity 75204
Deputy Portfolio Manager
Relationship Manager
Inception Date
1/01/2002
Last Modified
26/03/2007 3:53:14 PM - ate

Figure 13: Individually Configurable Summary and Detail Portfolio Pages

2.2 Time-based One-Time Passwords

The login process has been enhanced with an additional layer of security. Users can now use their **authenticator app** (such as Microsoft Authenticator, Google Authenticator, or similar) to generate **one-time passwords (OTPs)** when signing in.

This feature provides stronger protection for user accounts by ensuring that access requires not only a password but also a time-sensitive verification code generated on the user's trusted device. Once configured, the authenticator app seamlessly integrates into the login workflow, offering a more secure and convenient authentication experience.

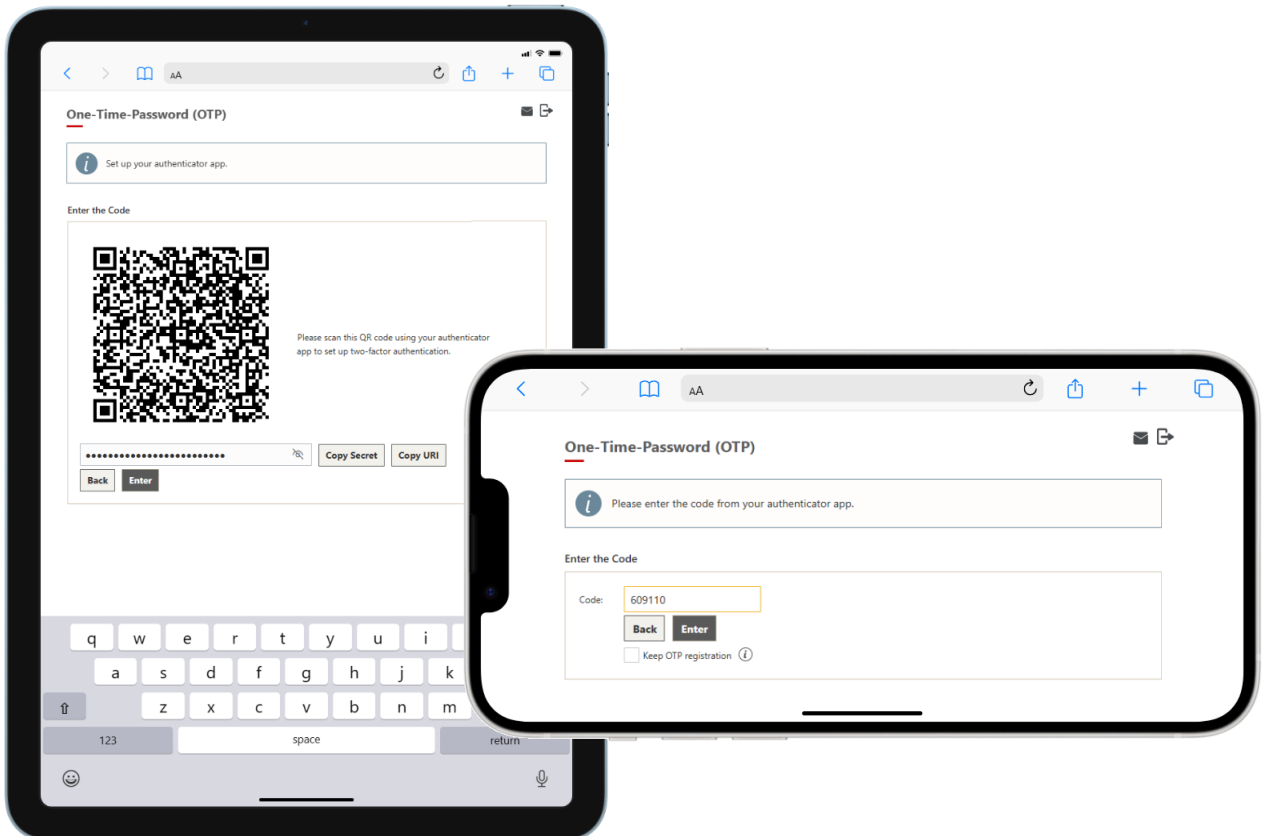


Figure 14: Login with a One-Time Password from an Authenticator App.

3. Modules & Interfaces

3.1 Private Equity: New Methods



New methods, which allow a user to distinguish distribution amounts from private equity positions in income and capital are available in the private equity module.

These methods can calculate the distribution amounts in investment and reference currency, as well as since inception or over a period.

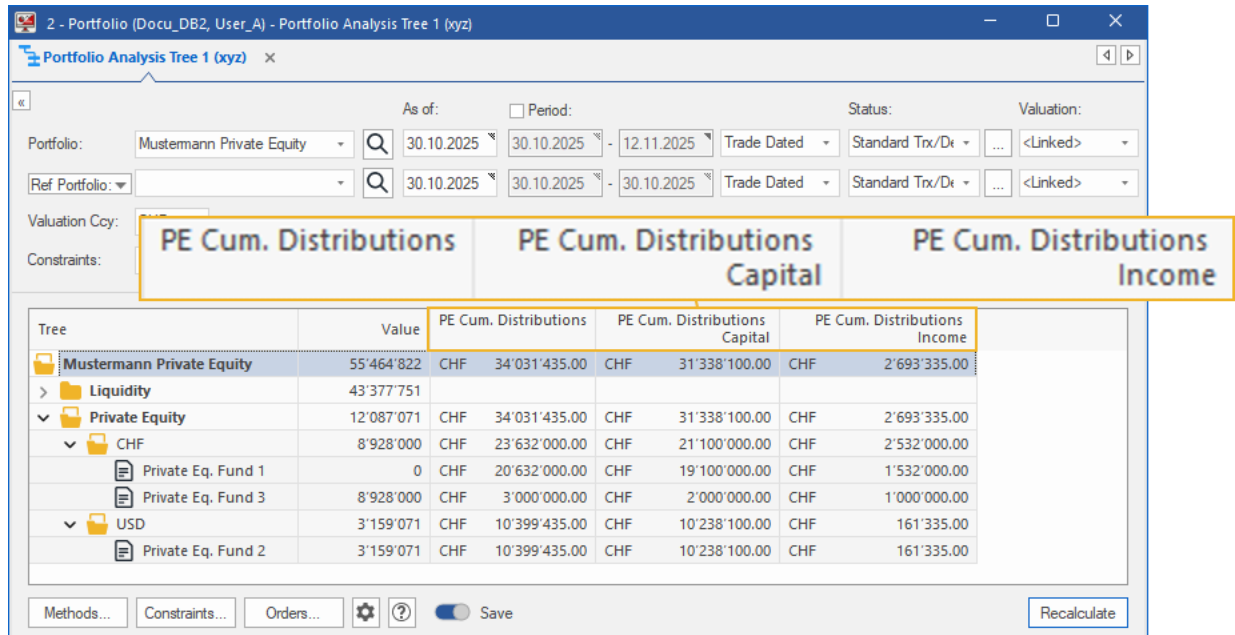


Figure 15: New Methods Private Equity

Note: This functionality is part of the licensed Private Equity module.

3.2 Public API Extension for Position Data Retrieval



The API capabilities have been extended to include position data retrieval, supplementing the existing read/write operations within the **Customer Management** module (Legal Entities, Portfolio Master Data) and the **Data Management** module (User Information, Container Structures).

This update enables the fetching of detailed position data for cash and financial instruments. The response payload includes key attributes such as cost price, accrued interest, and FX rates, providing the necessary data points to support external reconciliation workflows.

The following packages are available:

<h3>Customer Management</h3> <ul style="list-style-type: none"> Legal Entities Portfolios Documents Notes 	<h3>Custody Services</h3> <ul style="list-style-type: none"> Investment Objects Time Series Transactions Corporate Events Reconciliation
<h3>Data Management/Administration</h3> <ul style="list-style-type: none"> Code Values User Container 	<h3>Trade Order Management</h3> <ul style="list-style-type: none"> Orders

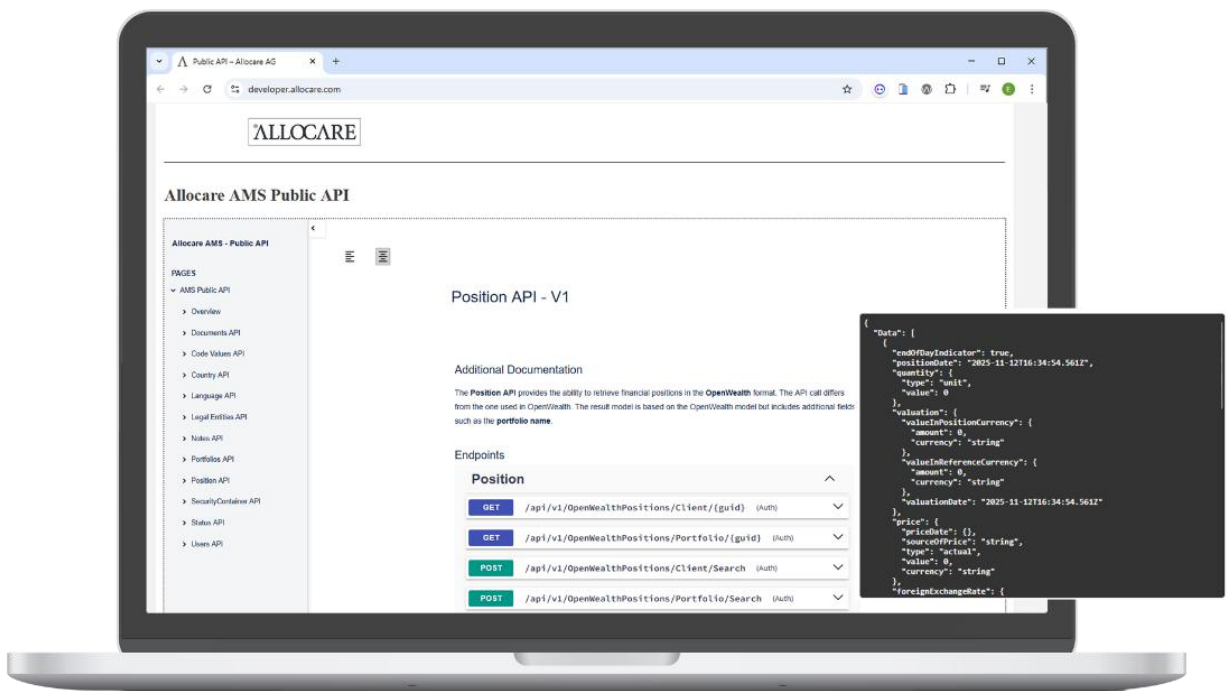


Figure 16: Allocare AMS Public API Extension for Position Data Retrieval

3.3 Custodian Interfaces



These interfaces to custodian banks are currently available. The availability of interfaces is continuously being expanded and can be viewed at any time on our website.

www.allocare.com/en/products/interfaces | www.allocare.com/de/produkte/schnittstellen (german)

The following interfaces were added this year (new interfaces in bold):

Custodian interfaces currently available

Aargauer Kantonalbank | ABN-AMRO | Allianz Bank | Aquila AG | Astrobank | Axion SWISS Bank | BancaStato
Banca del Ceresio SA | Banca del Sempione | **Banque Cantonale du Valais** | Banque de Luxembourg | bank zweiplus
Banque CIC | Banque Pictet & Cie. SA | Banque Syz SA | Basellandschaftliche Kantonalbank | Berner Kantonalbank
BNP Paribas | Bordier & Cie. | BPS Suisse SA | Caceis / Funds | Clientis Banken | Cornèr Banca SA | Credit Suisse
Deutsche Bank | Edmond de Rothschild | EFG Bank AG | Frankfurter Bankgesellschaft | Glarner Kantonalbank
Graubündner Kantonalbank | HSBC / Funds | **Interactive Brokers** | J. Safra Sarasin | JP Morgan AG | Julius Bär AG
KaiserPartner | **KBC Group** | LGT Bank AG | Liechtensteinische Landesbank | Lombard Odier & Co. SA
Luzerner Kantonalbank | Miraubaud & Cie. SA | Morgan Stanley | Neue Bank AG | **Northern Trust**
Obwaldner Kantonalbank | PUILAETCO | Quintet Private Bank | Rahn + Bodmer Co. | Reyl & Cie. SA | Saxo Bank
Schwyzer Kantonalbank | SCOBAG Privatbank | **Spuerkeess** | St. Galler Kantonalbank | State Street
Swissquote Bank AG | Thurgauer Kantonalbank | UBS Europe | UBS Switzerland AG | UBP SA | V-Bank AG
Valiant Bank AG | Vontobel | VP Bank AG | Zuger Kantonalbank | Zürcher Kantonalbank

Figure 17: Available Custodian Interfaces

4. System Requirements

4.1 Operating Systems

Allocare AMS Release 25.9 supports the following operating systems for workstations:

- Windows 11
- Windows 10 (Dark Mode Theme only works properly from version 1809 onwards)

Allocare AMS Release 25.9 supports the following server operating systems running Microsoft SQL Server or Internet Information Services:

- Microsoft Windows Server 2022
- Microsoft Windows Server 2019
- Microsoft Windows Server 2016

Note: Microsoft SQL Server 2012 and 2014 are no longer supported and will be decommissioned as of Release 25.9.

4.2 Database Management Systems

Allocare AMS Release 25.9 supports the following database management systems:

- Microsoft SQL Server 2022
- Microsoft SQL Server 2019 (Cumulative Update 3)
- Microsoft SQL Server 2017 (Cumulative Update 19)
- Microsoft SQL Server 2016, Service Pack 1

4.3 Web Servers

Allocare WEB Release 25.9 will run on Microsoft IIS 7.0 up to 10.0.

- Microsoft .NET Framework 4.8 (incl. ASP.NET)

4.4 Web Browsers

Allocare WEB Release 25.9 supports the following web browsers:

- Microsoft Edge (Chromium)
- Firefox
- Chrome
- Safari on Macintosh

5. Installation Requirements

The following information is for people responsible for the installation of the Allocare AMS and Allocare WEB applications.

5.1 Microsoft Visual C++ Redistributable

A required prerequisite to run the Allocare AMS application suite is *Microsoft Visual C++ 2015-2022 Redistributable (x64) - 14.34.31931* that must be available on a client machine. Allocare WEB Service also requires this redistributable.

This will be installed automatically when using the Setup executable provided on the installation image. When the Setup executable is not used, the redistributable must be installed manually or the required files must be copied from the image.

5.2 Microsoft .NET Framework

A required prerequisite to run the Allocare AMS application suite and Allocare WEB (Service) is Microsoft .NET Framework 4.8 which must be available on a client or web server machine.

It will be installed automatically when using the Setup executable provided on the installation image.

When the Setup executable is not used, the redistributable must be installed manually.