

numas SA

YOUR WEALTH MANAGEMENT SERVICE-PROVIDER FOR DATA, REPORTING AND SOFTWARE

What we offer.

Our modular services for wealth managers and family offices in Switzerland and abroad are divided into three areas, which we differentiate between Standard, Advanced and Individual, depending on the scope of services (as shown on the overview graphic).

↓ DATA MANAGEMENT

📊 REPORTING

📁 SOFTWARE AS A SERVICE (SAAS)

We supply this data based on a cooperation with SIX (www.six.ch) or use the price source of your choice. Are your requirements more complex? We can also load extended master data such as customer risk profiles, ratings or benchmarks (including composite benchmarks) into the system as required. If you need your system to be connected to other software, such as a CRM or archive system, we can take care of that with pleasure.

On our overview graphic you can see the possible scope of services and you can quickly decide what you need and where we can support you.

DATA MANAGEMENT

If you are running your own portfolio management and reportingsystem and often have problems that data relevant to servicing of your customers is missing or not correct and timely in the system - then talk to us! We offer professional data management regardless of which system or which domestic or global custodian banks you use.

When it comes to data processing, we rely on automated interfaces, scan interfaces and also enter position and transaction data manually on an end of day basis. We reconcile the booked information with bank receipts and bank statements at the frequency you require and export them to the system you use. You can access the correct reconciled data in your system at any time. We can also offer the master and price data of your customers' investments.

REPORTING

We would be pleased to produce your client reporting. We offer a large choice of reports such as:

- Monthly standard customer reporting with performance, Asset listing by asset category with your logo, including the integration of your market comments
- Extended reporting, e.g. consolidation of various custodian banks, addition of non-bankable assets such as real estate, private equity, crypto assets or works of art
- Individual reports developed exactly according to your needs
- Compliance and risk reports flagging any limit violations
- Regulatory reporting e.g. for FIDLEG, MIFID, AML, BVV2
- Overview reports and dashboards consolidated across your customer base.

	Standard 01	Advanced 02	Individual 03
DATA MANAGEMENT Obtaining Data Data processing Data reconciliation 	<ul style="list-style-type: none"> - Obtaining and processing transactions from custodian banks on a daily basis (electronic processing) - Daily loading of instrument master data and prices from SIX - Providing a reconciliation report 	<ul style="list-style-type: none"> - Manual, daily entry of transactions - Support in the reconciliation process - Loading prices from custodian banks - Various portfolio valuations - Loading advanced master data: ratings, benchmarks, classifications 	<ul style="list-style-type: none"> - Recording and processing of special instruments and their transactions (private equity, real estate, etc.) - Loading customer-specific data - Connection to external systems (e.g. document management) - Loading your own ratings
REPORTING 	<ul style="list-style-type: none"> - Monthly standard customer reporting with your logo and contact details 	<ul style="list-style-type: none"> - Extended reporting (e.g. consolidations) - Colors and fonts in your corporate identity style - Integration of your market-comments 	<ul style="list-style-type: none"> - Individualized reports tailored to customer needs - Report customisations - Integration of external content, e.g. analysis of individual assets
SOFTWARE AS A SERVICE (SAAS) CRM Portfolio Management Compliance 	<ul style="list-style-type: none"> - Online access (read only) - Standard dashboard - Software Support - Data storage on multi-tenancy platform database - Performance measurement (TWR, MWR, IRR) - Collection of basic customer data - Setting up investment limits for each investment strategy - Post Trade Checks on Investment Restriction 	<ul style="list-style-type: none"> - Online access (read only) - Additional dashboards - Data storage on multi-tenancy platform database - Notes, Checklists for FIDLEG/MIFID - Transaction Monitoring - Risk profile comparison by portfolio - Customer-specific investment limits control - Order entry with pre-trade investment constraints checking - Additional Analysis Methods 	<ul style="list-style-type: none"> - Data storage on our own server (hosted or in our own data center) - Individual dashboards, also as MIS mapping of the complete order workflow - Electronic order export (brokers, banks) - Breach workflow (Tracking of breaches) - Special modules: Private Equity, Real Estate, VaR, Stress Tests / Scenario Analysis - Rule sets for fund law checks for various fund domiciles

SOFTWARE AS A SERVICE (SAAS) – THE NUMAS WEALTH MANAGEMENT SYSTEM (numas WMS)

You require a (new) system for reporting and wealth management, but do not want to operate it “in-house”? Use the multi-tenancy capable numas WMS* on our Swiss platform!

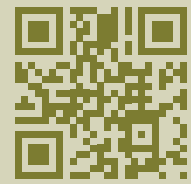
With numas WMS, we offer you a state-of-the-art and tested modern portfolio management and reporting system, which we operate on our platform. Using numas WMS together with our data management services ensures that all the data you need from the various custodian banks including non-bankable assets is available accurately and on a daily basis. With numas WMS run on our platform, your front and back office team can use functionalities that individual employees need in their respective roles.

The service spectrum is broad:

- Online access (read only or read & write)
- CRM functionalities such as checklists and notes from customer meetings based on FIDLEG/MIFID rules
- Order entry, order management and order control as well as mapping of your order workflow
- Performance measurement using various calculation methods, even for private equity investments
- Various compliance and risk management as well as anti-money laundering checks (e.g. pre- and post-trade)
- Investment restriction checks, transaction monitoring, suitability and appropriateness of investments according to the individual risk profile of your customers etc. with a corresponding follow-up workflow
- Compliance and legal checks for funds with different fund domiciles as well as individual fund rules

Contact:

numas SA
Patrick Schellenberg (CEO)
 Freitgutstrasse 26
 8002 Zürich
 Tel. 044 521 11 40
 email: patrick.schellenberg@numas.ch



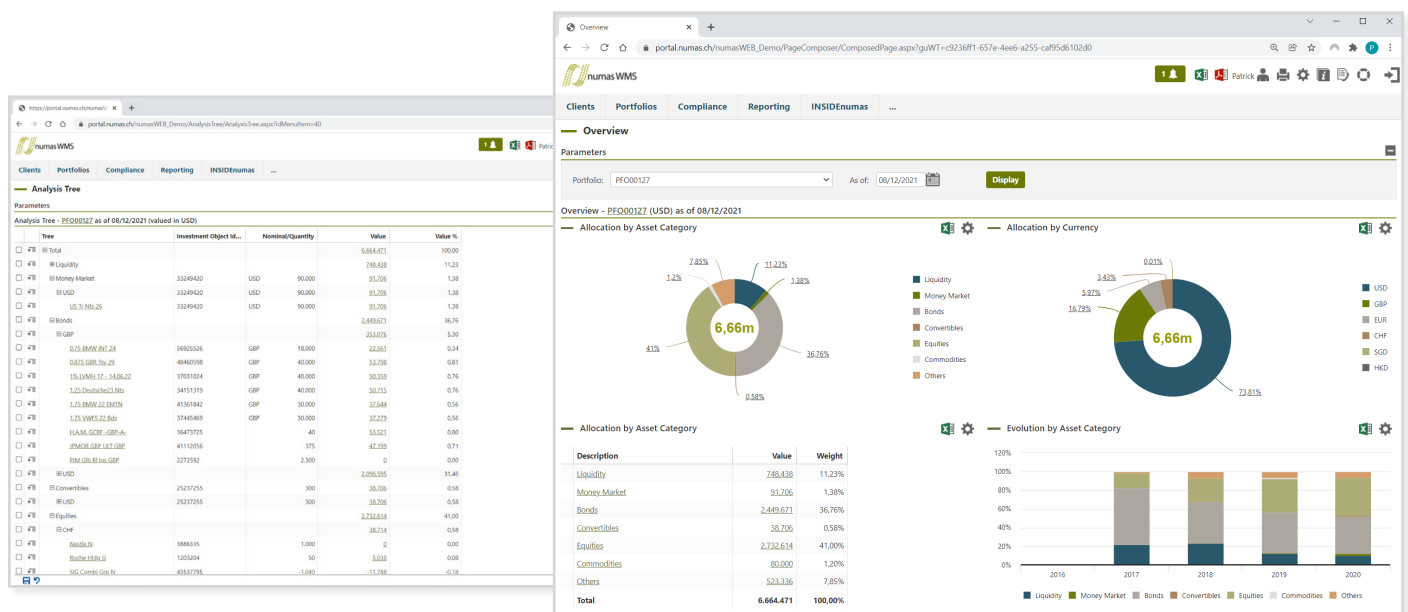
- Tailormade customer reporting, also consolidated, in the corporate identity layout of your company
- Dashboards, KPIs and management cockpits
- Stress tests as well as scenario and VaR analyses

You have secure system access from anywhere at any time, controlled according to your individual authorisation concept. Specific access for one or all of your customers to numas WMS can be arranged at any time.

ADDITIONAL-SERVICES

In addition to the services described, we also could provide the following solutions:

- Setting up of customer portfolios
- Definition of individualised templates for system queries, be it for customers or for compliance and risk checks, so that you can get the information you need as efficiently as possible
- Automated management fee calculation including invoicing
- Education, training and software support
- Data management and storage according to your requirements



About numas SA

Founded in 2016, numas SA (www.numas.ch) is a start-up in the fintech sector based in Zurich. The employees have many years of experience with banks and wealth managers in the areas of IT/data management, legal and HR. The company supports customers, especially family offices and wealth managers, in the procurement, processing and export of data and information of all kinds.

Moreover, the company offers individualised reporting and, with numas **WMS***, a state-of-the-art portfolio management system as a service Platform. The system and all processed data are always and exclusively located in Switzerland, because at numas “pure Swissness” applies. numas SA has various asset managers and family offices in Switzerland and abroad among its customers, who have for many years relied on the services offered. Since July 1, 2021, numas SA is fully owned by the Allocare Group (www.allocare.com).

* = numas WMS is based on the Allocare AMS software products, which have been on the market for over 20 years, and the web-based add-on Allocare WEB. numas provides both solutions as a service (read only or read & write) on its platform. The services from numas also comprise the individualised parameterisation of solutions tailored to the needs of the respective customer.